

# Neue Erkenntnisse aus der strukturellen MRT-Bildgebung bei der Bipolaren Störung

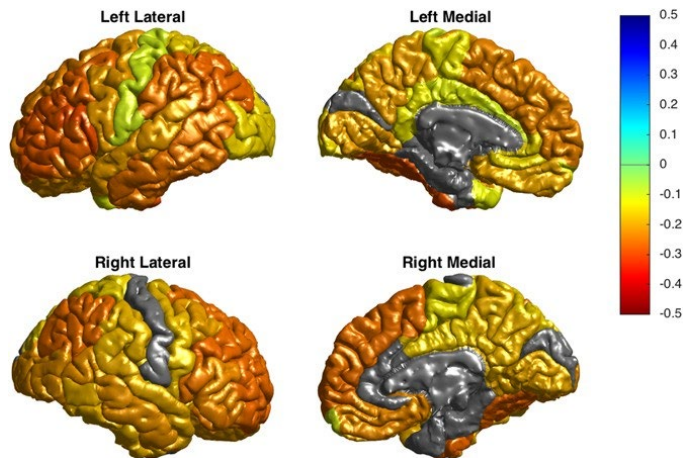


DGBS 2023

Prof. Dr. Jonathan Repple, Universitätsklinikum Frankfurt, Klinik für Psychiatrie, Psychosomatik und Psychotherapie

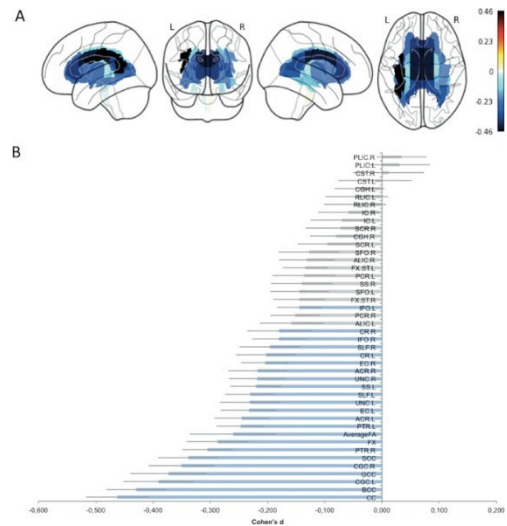
# ENIGMA

## Kortikale Dicke



Hibar et al 2018 Molecular Psychiatry  
Abe, ..., Repple et al. 2022 Biological Psychiatry

## Mikrostruktur der weißen Substanz

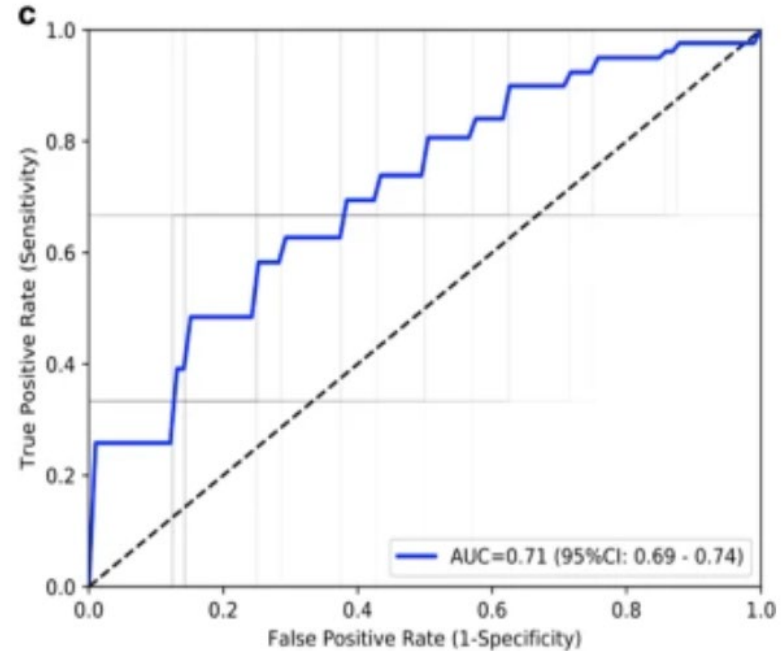


Favre, ..., Repple et al 2019 Neuropsychopharmacology

# Prädiktion der Bipolaren Störung

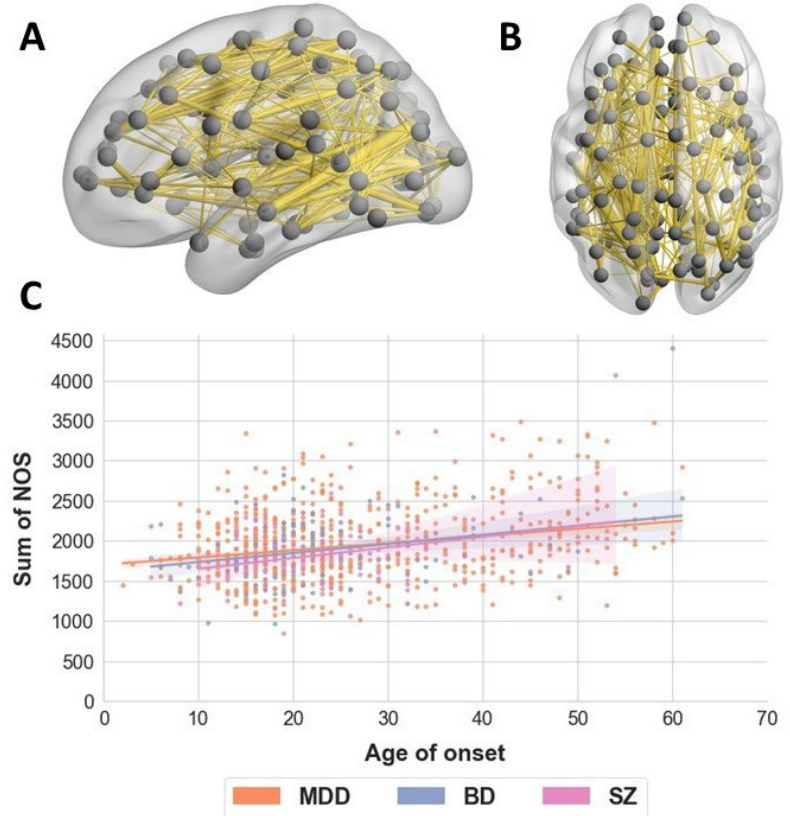
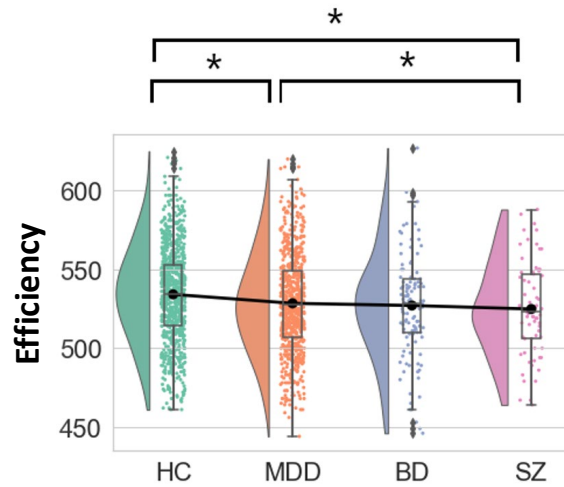
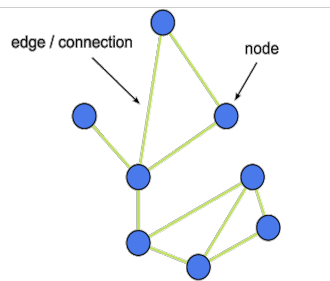


Aggregate subject-level analyses yielded the highest accuracy (65.23%, 95% CI = 63.47–67.00, ROC-AUC = 71.49%, 95% CI = 69.39–73.59)

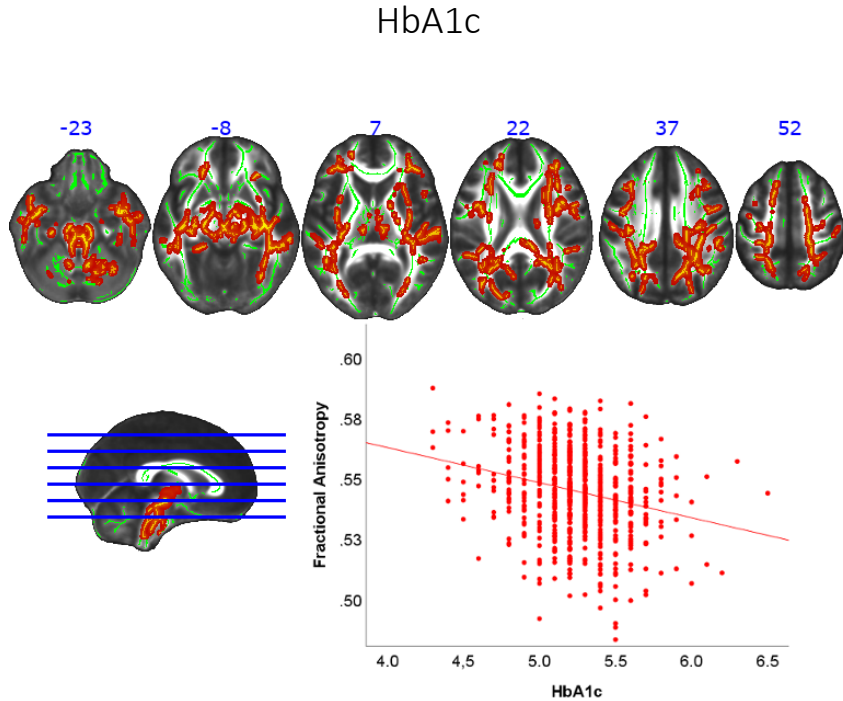


Nuneset al, 2020 Molecular Psychiatry

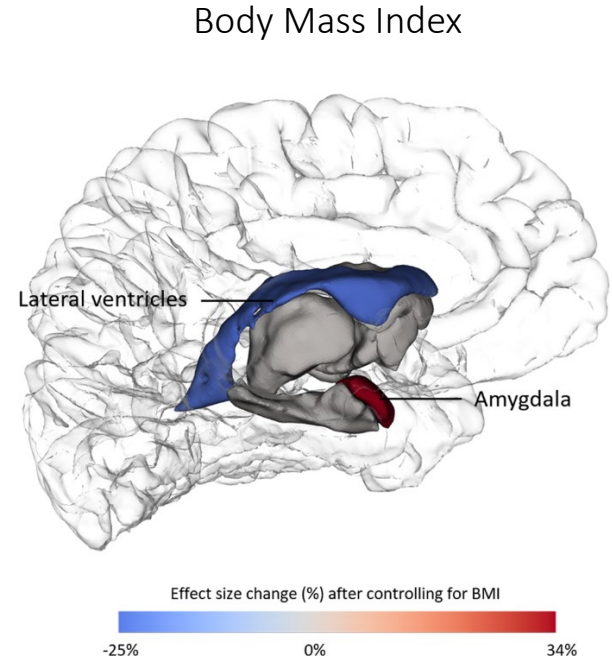
# Diagnosespezifisch vs. Transdiagnostisch



# Metabolische Faktoren

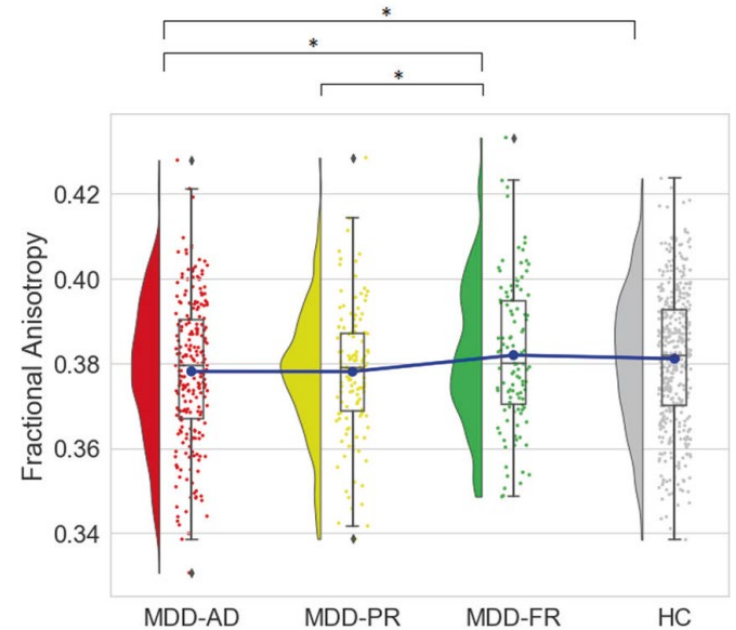
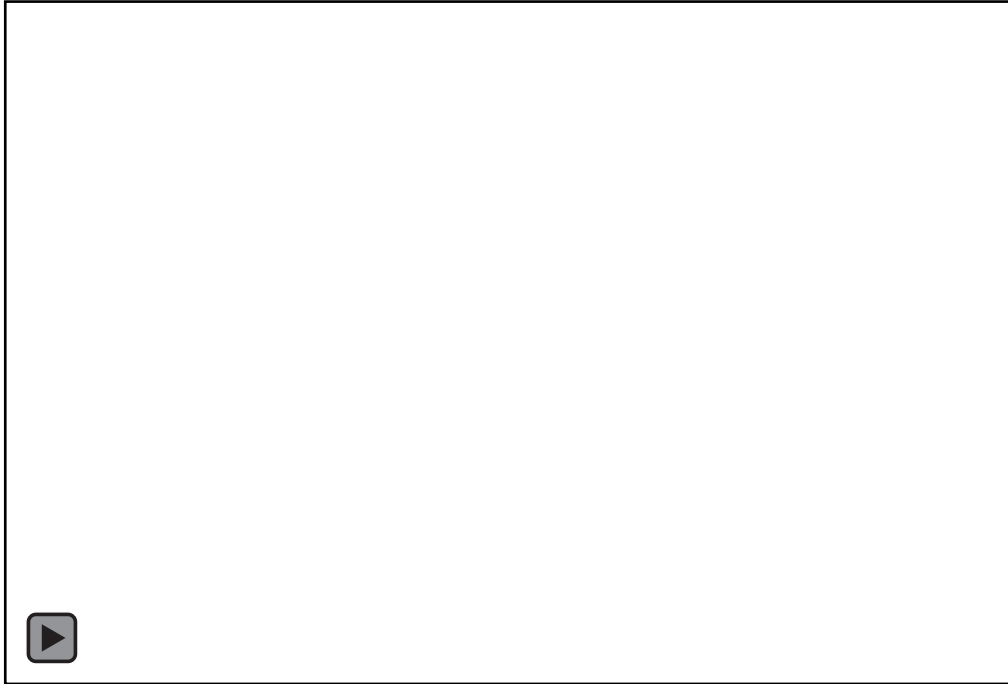


Repple et al, 2021 Molecular Psychiatry

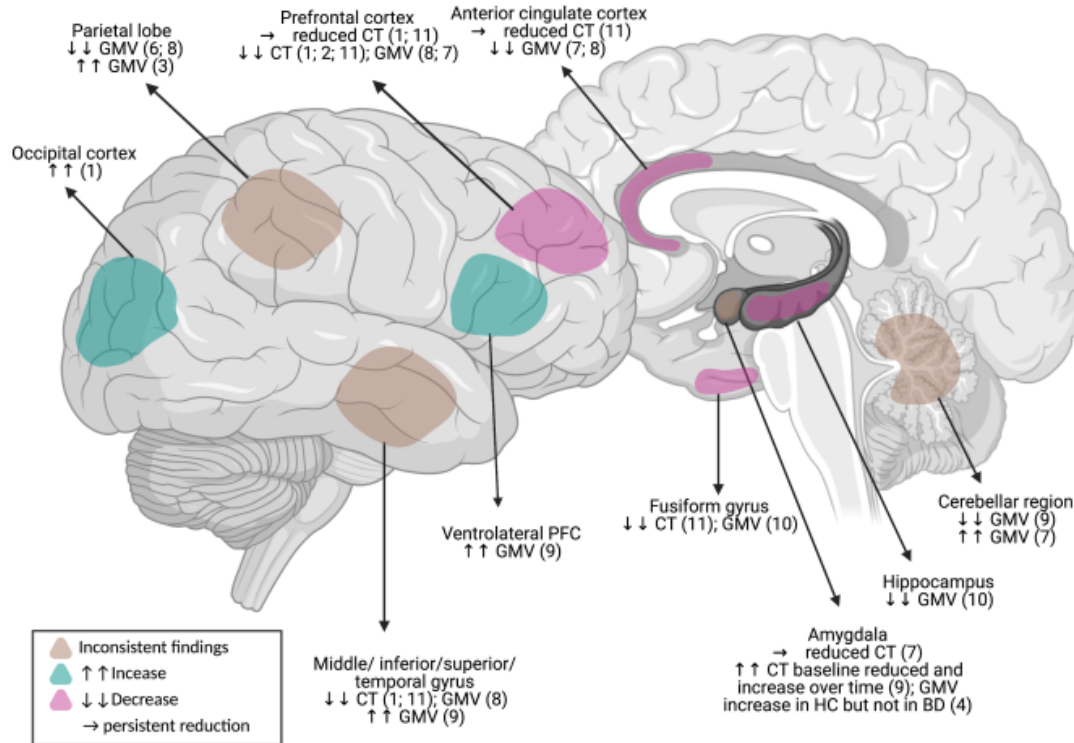


McWhinney, ..., Repple et al, 2021 Molecular Psychiatry

# Dynamische Veränderungen der Hirnkonnektivität

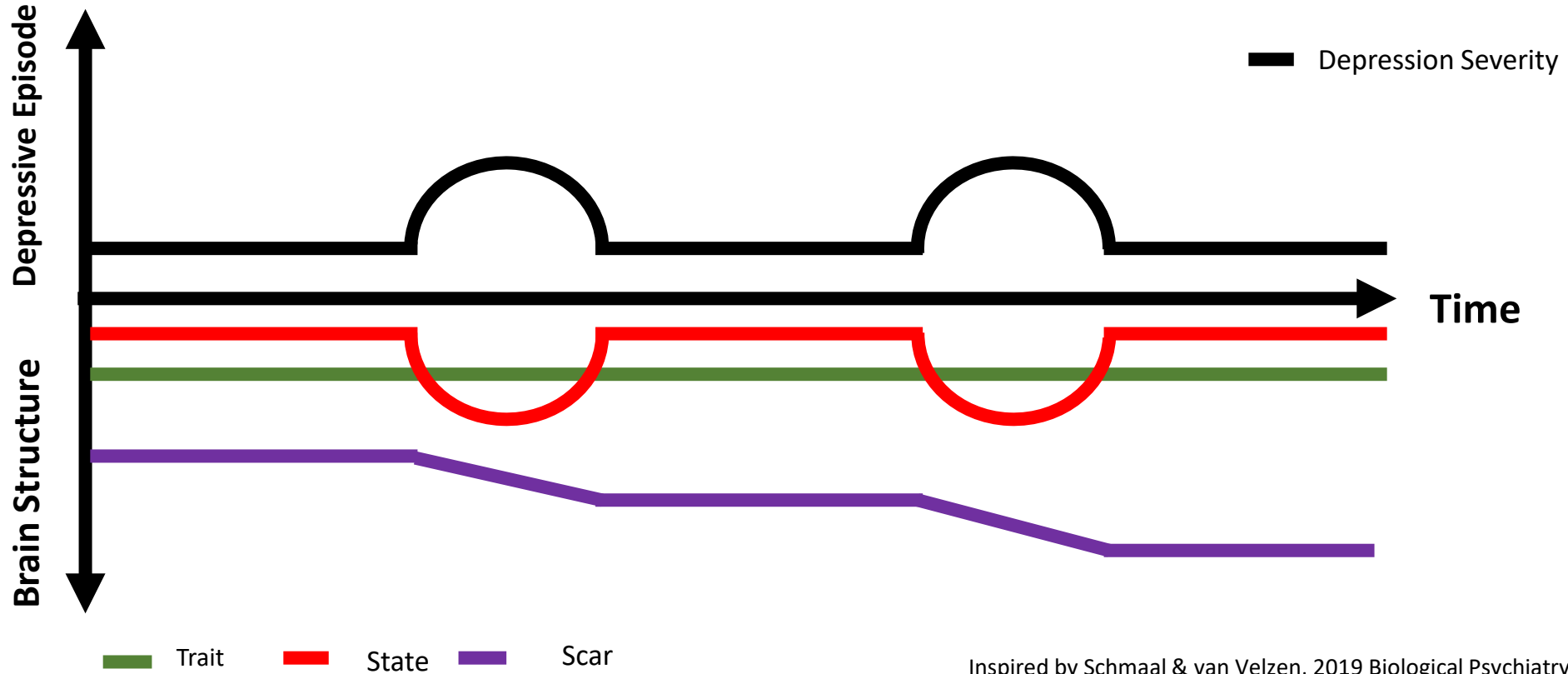


# Longitudinale Veränderung bei bipolarer Störung



- 11 studies
- largest sample 90 patients
- Follow-up: 1-4 years (2 studies with 6 years follow-up)
- Decline in Gray Matter CT and volume related to mood episodes

# Was ist das? Biomarker, Endophenotyp, Zustand, Eigenschaft?





Vielen Dank für die Aufmerksamkeit!